

OMNITRONIC CSQ Ceiling speaker



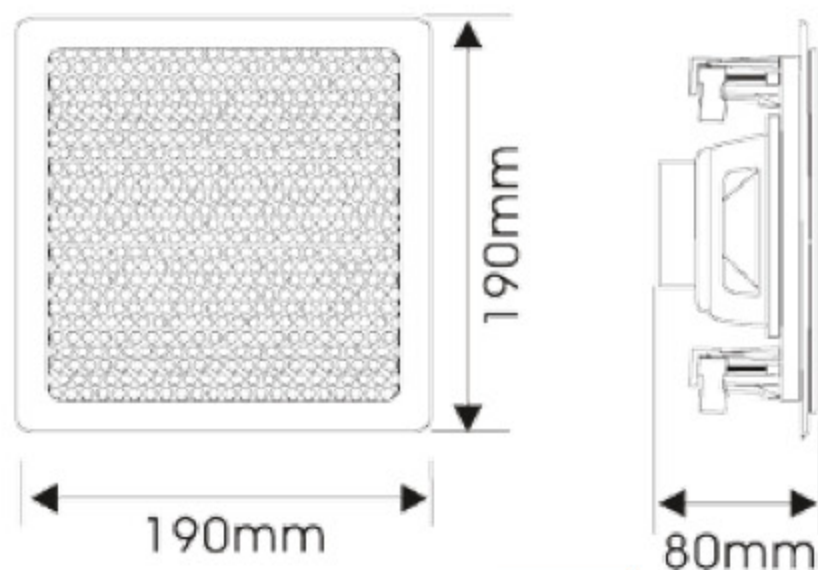
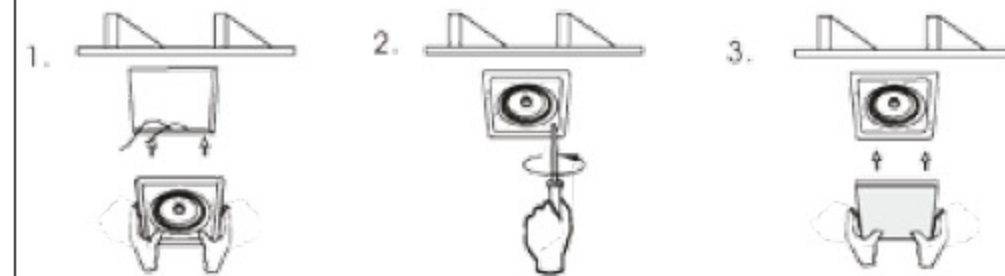
2-way system
3 power taps
For indoor PA systems



No. 80710335..... CSQ-4
No. 80710345..... CSQ-5
No. 80710355..... CSQ-6

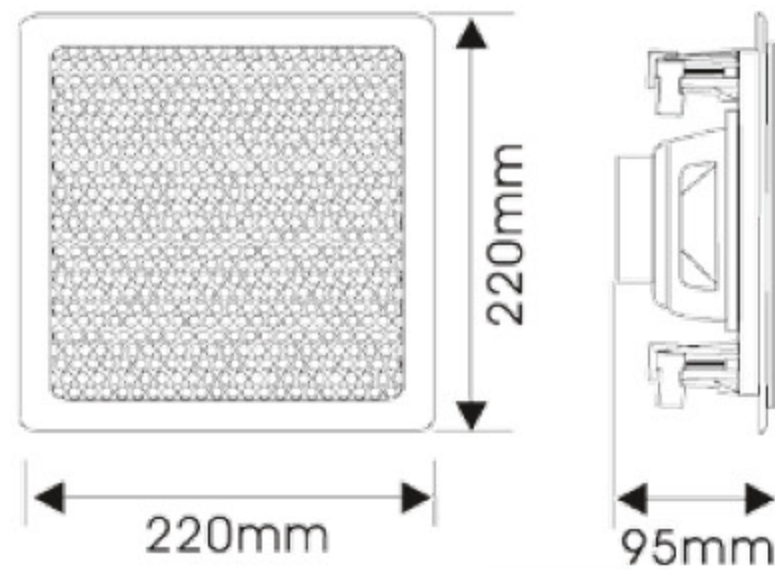


• 2-way system with 10 cm woofer (4") and 1.5 cm tweeter (0.5") • 100 V transformer with 3 power taps • Easy installation with clips • Plastic housing with metal grille in white • For amplifying systems in indoor PA systems



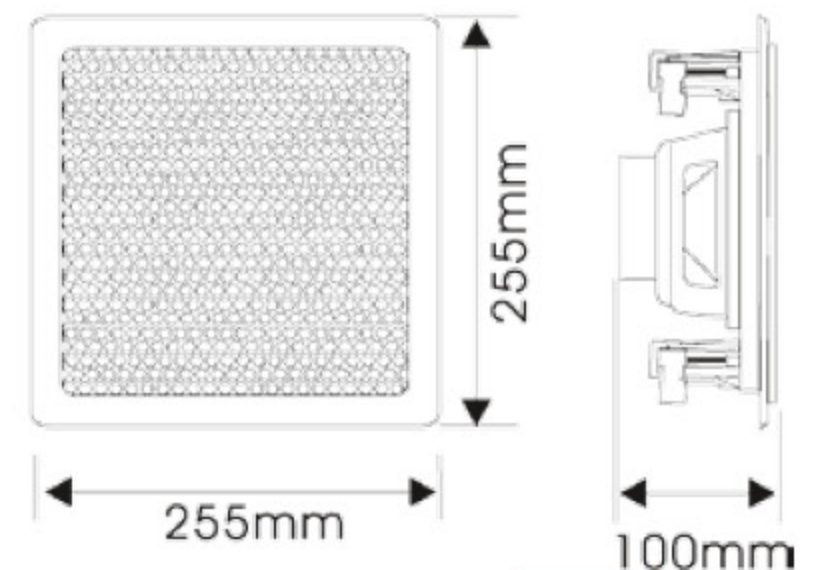
CSS-4

CSQ-4



CSS-5

CSQ-5



CSS-6

CSQ-6